



# Heavy Duty & Overrunning Clutch Brake Group Overview

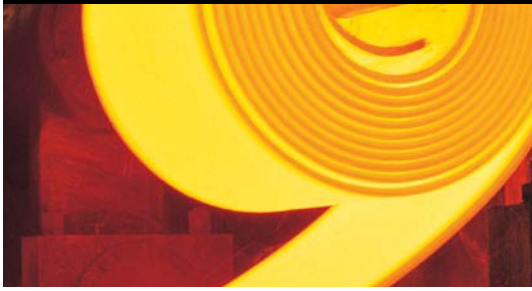


 **Altra**<sup>®</sup>  
Industrial Motion

**TEKMATIC**

Distribuidor exclusivo para la República Argentina  
T 011 4222 5540 - F 011 4201 2478  
www.tekmatic.com.ar - info@tekmatic.com.ar





## ALTRA INDUSTRIAL MOTION IS AT THE FOREFRONT OF THE LEADING POWER TRANSMISSION TECHNOLOGY PROVIDERS FOR HEAVY DUTY & OVERRUNNING CLUTCHES AND BRAKES

Altra Industrial Motion, as a leading multinational designer and producer of advanced pneumatic, hydraulic and electromechanical power transmission solutions, has the technology and engineering capability to provide state-of-the-art drive and braking solutions. Altra Industrial Motions demonstrated expertise in this industry positions its multiple brands to meet the needs of this demanding marketplace.



## EXTENSIVE APPLICATION EXPERIENCE

The Heavy Duty & Overrunning Clutch Brake Group (HDOCB) can supply a comprehensive range of clutches and brakes for the marine, oil and gas, mining and metals industries that have been proven in a wide variety of applications including anchor handling, cable laying, pumps, presses, draglines, shovels, ballmills, conveyors, gearboxes and drive applications. Their rugged construction is known to provide dependable performance and extended service life in tough conditions.



 **Altra**<sup>®</sup>  
Heavy Duty & Overrunning  
Clutch Brake Group





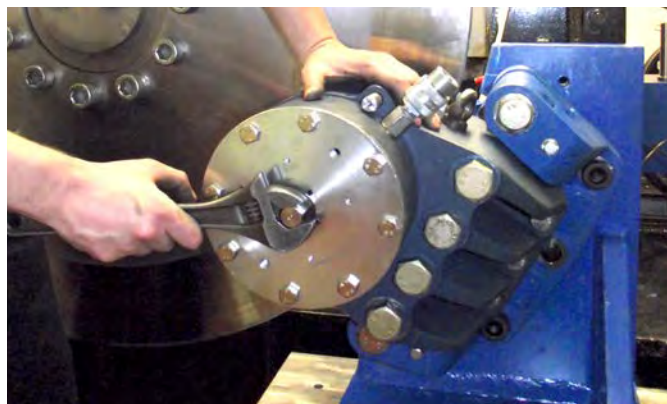
## WORLDWIDE CUSTOMER SUPPORT

HDOCB Group engineering teams, manufacturing facilities and commercial offices are strategically located around the world to provide exceptional customer service, engineering and product support.



## ADVANCED TESTING AND RESEARCH

HDOCB Group companies have the capability to rapidly produce prototype units for test and evaluation by customers, or by using our own computer-controlled testing equipment to simulate the operating conditions of a specific client-defined application. In combination with electronic data acquisition, we can accelerate the design, testing and verification processes in order to meet the demands of shortened product development cycles.



## STATE-OF-THE-ART MANUFACTURING TECHNOLOGY

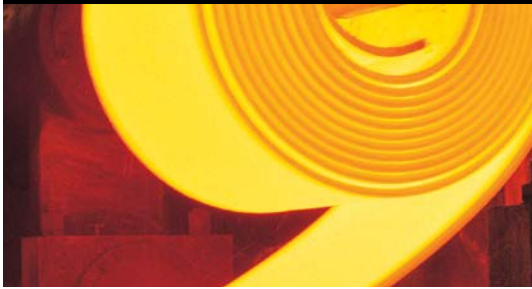
HDOCB groups ISO Certified manufacturing facilities feature the latest technology including precision machining centers. Our highly skilled manufacturing teams utilize the 'Altra Business System' to ensure that they are focused and aligned around key improvement priorities. ABS tools (e.g., continuous flow, standardized work and kanban) provide the means by which we achieve the improvements as we engage our entire workforce (via Total Associate involvement) to actively and aggressively drive us towards world-class performance.



## WORLD CLASS ENGINEERING

Our dedicated team of market-focused engineering and manufacturing staff provide innovative solutions to the technical and commercial challenges faced daily by industry technology developers. We employ a flexible approach to problem solving, enabling our teams to provide application and technical support from concept to completion. Many of the power transmission products in our comprehensive range can be customized to meet specific and unique requirements of individual project designs.





## MARKETS AND APPLICATIONS



### Mining

**Formsprag Clutch • Industrial Clutch • Marland Clutch  
Stieber • Twiflex**

The companies of Altra Industrial Motion supply the leaders in the mining machinery industry with a broad product offering to meet the specific power transmission and motion control requirements of all types of mining, quarry, and material handling equipment.

- Conveyors
- Drag Lines
- Shovels
- Quarrying



### Metals

**Twiflex • Wichita Clutch  
Industrial Clutch**

The HDOCB group supplies the leaders in the metals industry with a broad product offering to meet the specific power transmission and motion control requirements of all types of metal handling and manufacturing.

- Press and Shear
- Coilers and Slitters
- Hammer and Rolling Mills



# Altra® Heavy Duty & Overrunning Clutch Brake Group

## Marine

### Twiflex • Wichita Clutch

Designed for one of the most demanding operating environments, the HDOCB group offers the marine industry a broad product offering to meet their varied power transmission and motion control requirements. Their rugged construction is chosen to give dependable performance and extended service life.

- Main Propulsion Clutches
- Dynamic Winch Braking
- Dredging Drives
- Auxiliary Drives
- Propeller Shaft Braking
- Clutch Coupling Combinations

## Energy

### Formsprag Clutch • Marland Clutch Twiflex • Wichita Clutch Industrial Clutch • Stieber

To meet the global demand for gas and oil, OEM's and end users rely heavily on the proven technology solutions from the Altra family of brands for increased production, productivity and competitiveness.

- Drawworks
- Dynamic Winch Braking







## PRODUCTS

The Heavy Duty and Overrunning Clutch Brake Group has a product to suit virtually any requirement. Spring or pneumatically applied, high torque, low inertia, high-cycling, air-cooled, water-cooled, through-shaft, shaft-to-shaft; there's something for everyone in the Heavy Duty and Overrunning Clutch Brake Group line-up. Their rugged construction is chosen to give dependable performance and extended service life.

### Wichita Clutch

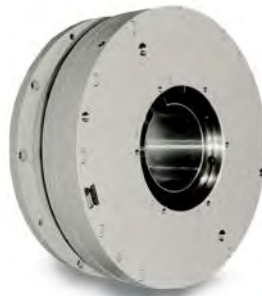


AquaMaKKs



Marine Standard  
Ventilated Clutches

### Industrial Clutch



Model HBA Clutch/Brake



LKB Spring Set Brakes

### Twiflex



VKSD



GMR



**Altra**<sup>®</sup>  
Heavy Duty & Overrunning  
Clutch Brake Group

**Formsprag Clutch**



Backstop Clutch



Clutch Coupling

**Marland Clutch**



CECON<sup>®</sup> Clutches



BC-MA Backstop

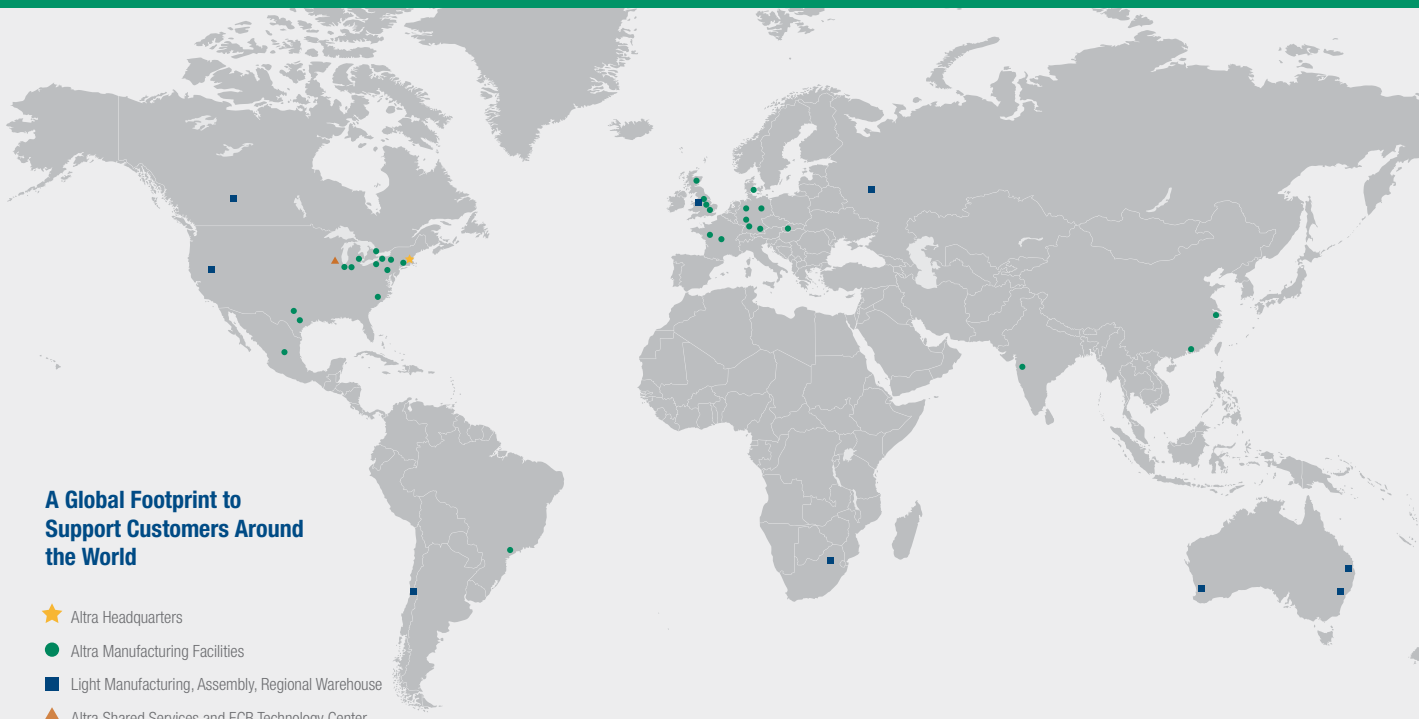
**Stieber**



GFR



RSCI



**A Global Footprint to Support Customers Around the World**

- ★ Altra Headquarters
- Altra Manufacturing Facilities
- Light Manufacturing, Assembly, Regional Warehouse
- ▲ Altra Shared Services and ECB Technology Center

**The Brands of Altra Industrial Motion**

**Couplings**

- Ameridrives**  
www.ameridrives.com
- Bibby Turboflex**  
www.bibbyturboflex.com
- Guardian Couplings**  
www.guardiancouplings.com
- Huco**  
www.huco.com
- Lamiflex Couplings**  
www.lamiflexcouplings.com
- Stromag**  
www.stromag.com
- TB Wood's**  
www.tbwoods.com

**Geared Cam Limit Switches**

- Stromag**  
www.stromag.com

**Electric Clutches & Brakes**

- Inertia Dynamics**  
www.idicb.com
- Matrix**  
www.matrix-international.com
- Stromag**  
www.stromag.com
- Warner Electric**  
www.warnerelectric.com

**Linear Products**

- Warner Linear**  
www.warnerlinear.com

**Engineered Bearing Assemblies**

- Kilian**  
www.kilianbearings.com

**Heavy Duty Clutches & Brakes**

- Industrial Clutch**  
www.indclutch.com
- Twiflex**  
www.twiflex.com
- Stromag**  
www.stromag.com
- Svendborg Brakes**  
www.svendborg-brakes.com
- Wichita Clutch**  
www.wichitaclutch.com
- Belted Drives**
- TB Wood's**  
www.tbwoods.com

**Gearing**

- Bauer Gear Motor**  
www.bauergears.com
- Boston Gear**  
www.bostongear.com
- Delroyd Worm Gear**  
www.delroyd.com
- Nuttall Gear**  
www.nuttallgear.com

**Overrunning Clutches**

- Formsprag Clutch**  
www.formsprag.com
- Marland Clutch**  
www.marland.com
- Stieber**  
www.stieberclutch.com

**Heavy Duty & Overrunning Clutch Brake Group**

<b>Industrial Clutch</b> 1-262-547-3357	<b>Formsprag Clutch</b> 1-586-758-5000	<b>Marland Clutch</b> 1-815-389-2582	<b>Stieber</b> +49 (0) 6221 30470
<b>Svendborg Brakes</b> +45 63 255 255	<b>Twiflex</b> +44 (0) 20 8894 1161	<b>Wichita Clutch</b> 1-940-723-3436 +44 (0) 1234 350311	